

Epoxy Roller Runners

91575 EPOXY SLIDE, SOFT-CLOSE

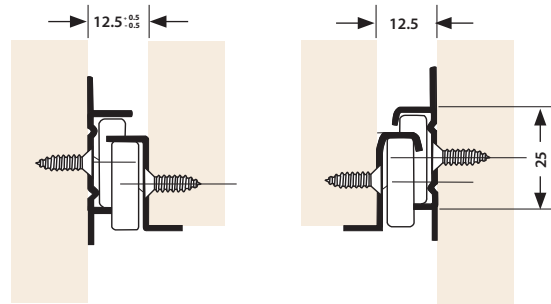


* 400 mm pictured

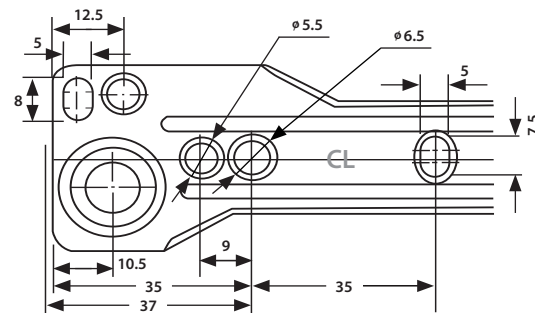
- Material: steel
- Closing: soft-close
- Opening: single extension
- Screwing: bottom-mount with screws
- Color: epoxy powder coated
- Packing: set or industrial
- Loading: 20 kg tested for 350 mm (14") length
- POM roller with 18.5 mm or 19 mm
- Soft-closing distance: 50 mm

Note: Hole pattern printed represents our prototype and there are more options. It might have been altered according to our customer's needs. Dimensions in mm

Installation guide



Fixing dimension on the cabinet



Drilling pattern

